



RJ-58139

23-

PATENTED

OFFICIAL

VALIDATED

ZERO OZONE EMISSIONS
AIR PURIFIED OZONE
AMERICAN MADE SPHERE
ELECTRIC LIST PHASE DOES
WAVE EXPOSED OZONE PPM AS
TESTED BY UL 987
UL CONNECTIVITY

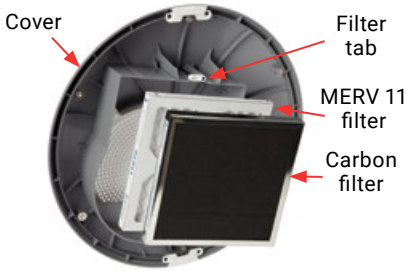
Dry Hydrogen Peroxide

The
SPHERE
QUICK START GUIDE

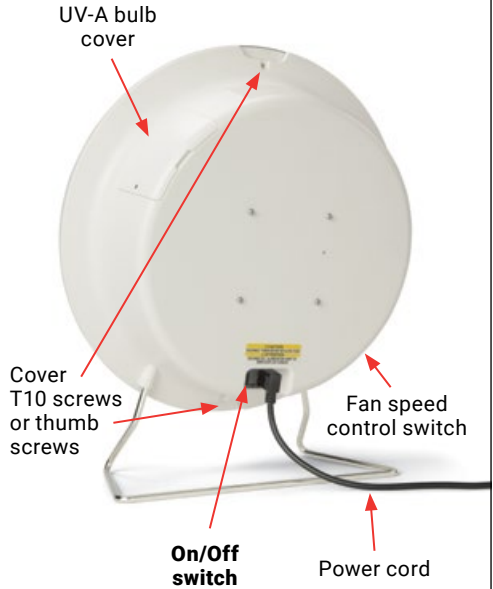


Getting to know your Synexis® Sphere

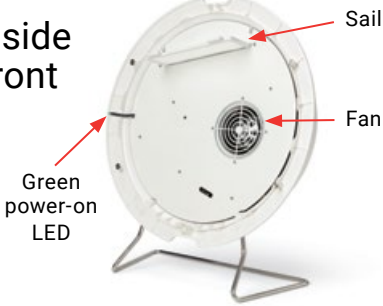
Inside Front Cover



Back



Inside Front

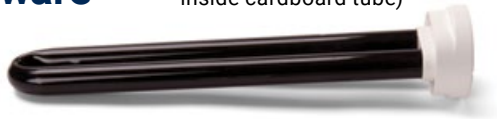


Included tools & hardware

Spare safety screws for bulb cover



UV-A bulb (packed inside cardboard tube)



Torx T10 T-handle screwdriver for wall bracket locking screw



Security Torx T10 L-shaped tool for UV-A bulb cover or front cover screws



Bracket for wall mounting (for installation instructions, see the owner's guide)



Find out more information on our website at synexis.com



Welcome. Thank you for your purchase.

Be sure to inspect all parts for damage prior to use. **DO NOT OPERATE THIS DEVICE IF ANY DAMAGE IS NOTED.** If the device is damaged, contact your Synexis Account Representative at (844) 352-7680.

WARNING: UV-A bulbs contain a small amount of mercury similar to any fluorescent bulb. Check with your local waste management authority for disposal or recycling requirements. Additional disposal and recycling information can be found at: lamprecycle.org.

READ FULL INSTRUCTIONS AND SAFETY/WARNING INFORMATION PRIOR TO USING THIS DEVICE. Do not mount Sphere device to the ceiling. See the owner's manual for full installation instructions.

The Synexis Sphere comes with the tabletop stand pre-installed. **However, there are some consumable items you will need to install prior to first use.**



Sphere Box Contains:

- Sphere device
- Metal stand (pre-installed)
- Wall mount bracket (optional wall mounting)
- Power cord
- **1 UV-A bulb for immediate installation**
- 1 Torx T10 T-Handle screwdriver for wall bracket locking screw
- 1 Security Torx T10 L-shaped tool for bulb cover or Sphere cover screws
- Quick Start Guide



Starter Kit Box Contains:

- **2 Sails, one for immediate installation** and one for use after device has run for 14 days
- **1 Carbon filter for immediate installation**
- **2 MERV 11 filters, one for immediate installation** and one for use after device has run for 14 days

Recommended Replacement Schedule

A Sail & MERV 11 filter (after first 14 days, then every 3 months)

B Carbon filter (every 6 months)

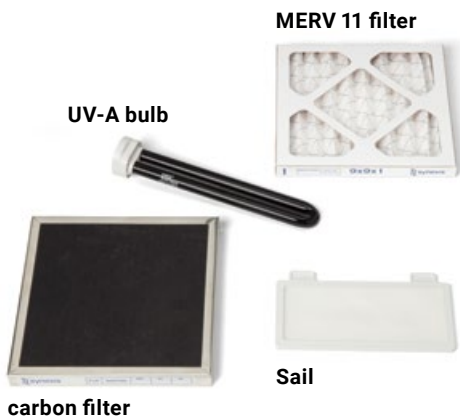
C UV-A bulb (every 2 years)



1**FIND CONSUMABLES**

Remove Sail, carbon filter, and MERV 11 filter from **Starter Kit box** and UV-A bulb from **Sphere box**.

(Extra Sail and MERV 11 filter are replacements to be installed after device has run for 14 days).

**2****SAIL INSTALLATION**

Place Sphere device on a stable, flat surface, then remove the screws at the top and bottom.

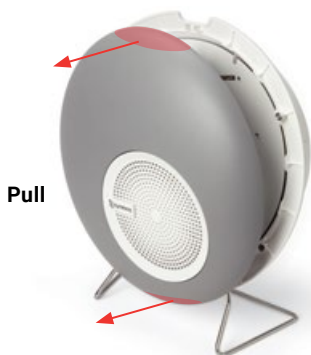
You will have one of three types of screws:

1. *Safety screws:* Remove with the Torx T10 L-shaped tool. Replace with provided thumb screws.
2. *Thumb screws:* Remove small top thumb screw, then remove longer bottom thumb screw.
3. *Thumb screws with retention clips:* Loosen top and bottom thumb screws to remove cover. Thumb screws will not come out completely.

Pull top and bottom of cover to disengage magnets and remove the front cover.

2

CONT.

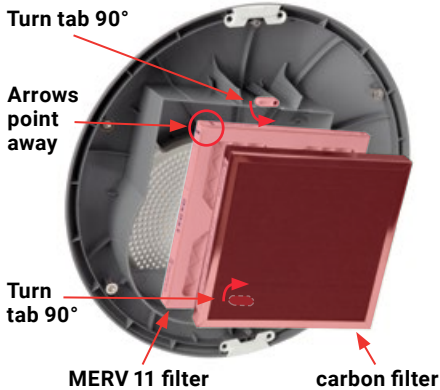
**3**

Insert the Sail (from the Starter Kit box) into the horizontal slot at the top.



4

Put MERV 11 filter into the square cavity in the front cover with **directional arrow pointing away from cover**, then place the carbon filter on top. Turn tabs 90 degrees to hold filters in place. Replace front cover and tighten screws.



5

Using Security Torx T10 L-shaped tool, remove the UV bulb cover.

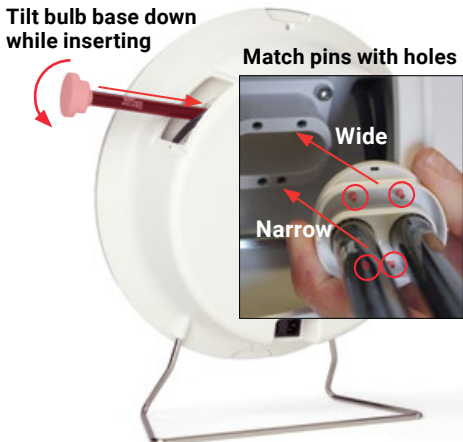


For more in-depth instructions, see the owner's manual at synexis.com/resources/materials/ or call 844-352-7680.



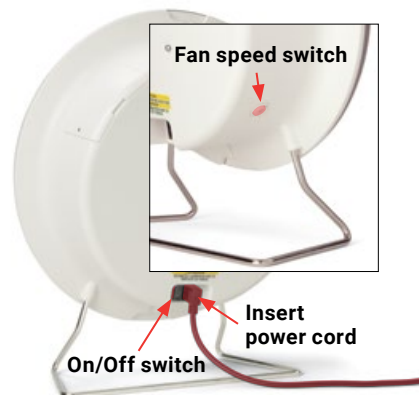
6

Align the 4 pins in bulb base to the holes in the socket (wide to wide, narrow to narrow) and insert, slightly tilting the bulb base down. **Push base firmly into socket.** Replace cover and tighten screw.



7

Firmly insert the power cord into back of Sphere. Plug cord into power outlet. Turn on, adjust fan speed to desired level (it takes a few seconds to hear the fan). **A blue glow should be visible through the top grille.** Enjoy your improved indoor air quality!



CALL 844-352-7680
FOR MORE SAILS, FILTERS,
OR BULBS



11711 W 79th Street
Lenexa, KS 66214
United States of America

(844) 352-7680
info@synexis.com
synexis.com