

# Sentry Maintenance Instructions



# Sentry Sail Installation



1  
Turn thumbscrew on front panel 90 degrees counterclockwise



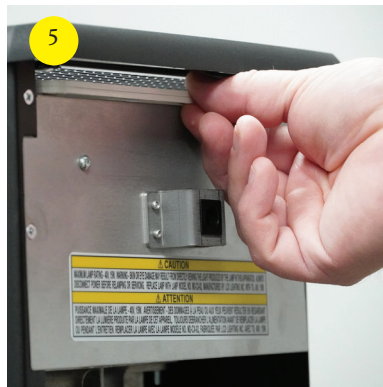
2  
Pull handle toward you to access the filters and Sail inside.



3  
Lay front cover down.



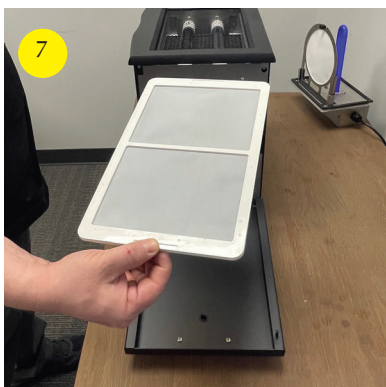
4  
You may need to tilt the Sentry toward you to get the sail to come out



5  
Remove old sail.



6  
Be sure to only handle the sail by the edges when removing or replacing.



7  
Slide new sail back into the slot.



8  
Close cover and turn knob 90 degrees counterclockwise to secure.



9  
Plug power cord back in and turn device back on.

# Replacing the Filters

Consumable replacement schedule can be found in [MyAccount](#).

Follow maintenance schedule outlined in MyAccount.



Turn thumbscrew on front panel 90 degrees counterclockwise to open.



Pull handle toward you to lower the front door panel



Lay front cover down.



Turn knob on filter compartment 90 degrees counterclockwise to access



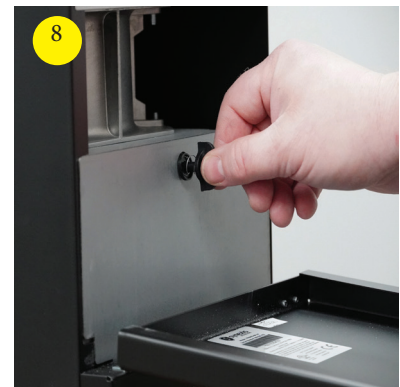
Check compartment for loose debris.



Insert new MERV 11 filter with airflow arrow pointing up.



Replace carbon filter on top of the MERV 11 filter.



With new filters in place, close cover and turn knob 90 degrees clockwise to secure.



# Replacing the UV Bulb



1 First, ensure power cord is removed from the Sentry device.



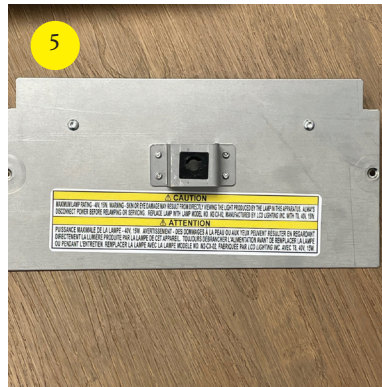
2 Locate knob on front panel.



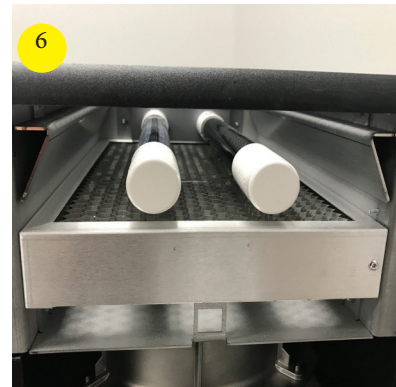
3 Turn knob 90 degrees counter-clockwise to open panel.



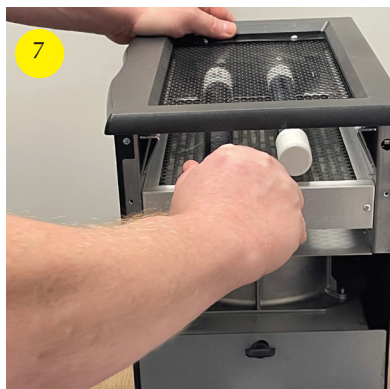
4 Using a Philips screwdriver, remove two screws on cover plate.



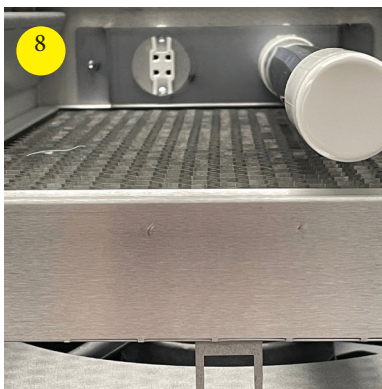
5 Set aside cover plate on tabletop.



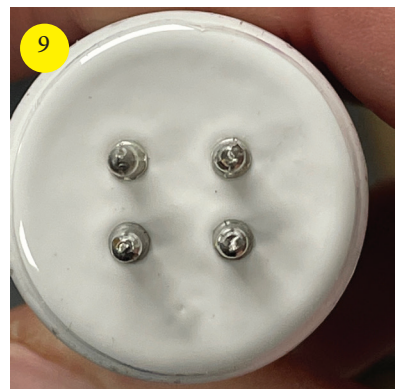
6 UV-A bulbs simply pull out of the sockets.



7 Pull old bulb straight out of socket.



8 Note pin pattern at rear of UV-A bulb socket.

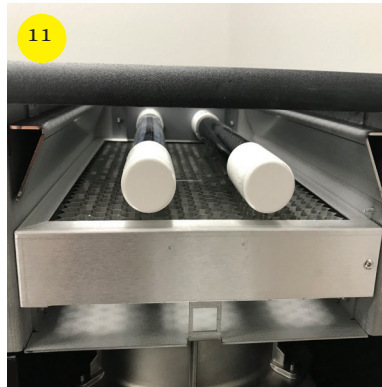


9 Align pins with pattern on UV-A bulb socket.

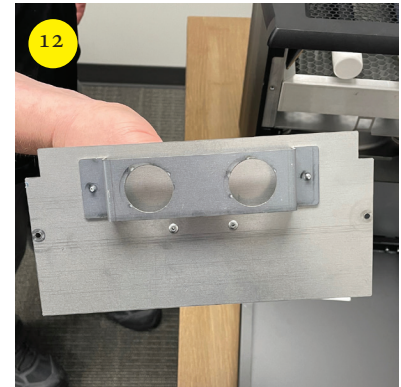
# Replacing the UV Bulb cont.



10 Push UV-A bulbs firmly into place in bulb sockets.



11 Ensure both UV-A bulbs are properly seated into bulb sockets.



12 Align cover plate to fit over back end of both bulbs and replace.



13 Tighten left and right screws on cover plate.



14 Raise front cover back up.



15 Close front cover.



16 Turn knob 90 degrees clockwise to secure.



17 Plug in and turn on the power switch.



18 Check to be sure lights are illuminated when power is turned on.